

THE CORINTHIAN

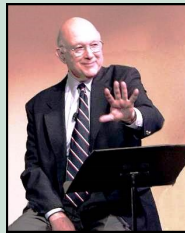
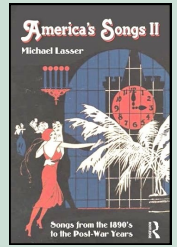
GREECE HISTORICAL SOCIETY and MUSEUM

May 2014

Tuesday, May 13th, 2014 Greece Town Hall - 7pm

“America’s Songs: *The Great American Songbook*”, by Michael Lasser

Between 1900 and 1950, an unequaled number of great songwriters from Berlin and Gershwin to Porter and Rodgers produced a body of song that has come to be known as the Great American Songbook. Most of the songs were collaborations between composers and lyricists. Collaboration comes complete with stories to tell. The stories are sometimes funny, sometimes unsettling; but universally give us some insight into something that fascinates almost everybody: the making of a successful popular song.



Michael Lasser is a lecturer, writer, broadcaster, critic, and teacher. For 30 years he has spoken at museums and universities around the country. Autographed copies of his books, *American Songs, Volume I & II* will be available for sale at the conclusion of the program. Volume I is \$33.00, Volume II is \$30.00 or both for \$56.00.

Public welcome. No reservations. GHS members, free. A \$2.00 donation is appreciated from others.

Volume 35, Issue 3

May-June 2014

In Every Issue:

President’s Message	2
Board of Trustees	4
Happenings	8
Contact Us	8

Points of Interest:

Programs	1
Calendar	2
Dessert Festival	9
Historian’s File	6

June 2014

Tuesday, June 10th, 2014 Greece Town Hall - 7pm

Early Settlements on the Genesee River

King’s Landing, McCrackenville, Deep Hollow, and Frankfort: A forgotten history
By **Jeffrey Ludwig**, City of Rochester Historical Researcher

Did you know King’s Landing, settled in 1796 and later known as Hanford Landing, was an early part of Greece before it was annexed by the City of Rochester in 1919? A marker at Hanford Road reads “THE FIRST WHITE SETTLEMENT AND LAKE PORT WEST OF THE GENESEE RIVER”. The founding pioneers’ dream was to own and establish profitable enterprises on navigable waterways. The falls at Frankfort, offered the power needed for saw mills and flour mills. Come and hear about the tragic end of King’s Landing and learn about the fascinating growth of Frankfort into a thriving community.

Jeff Ludwig is presently completing his doctoral studies in history at the University of Rochester and is the Site Manager of the museum at High Falls Center.



"President's Message"

By the time you are reading this spring should finally be here. It's been a long cold season outside, but inside at GHS we have been keeping the place warm with all our activities.



We have had the pleasure of receiving the assistance from several young volunteers who have completely updated the Native American exhibit and helped inventory and properly store our collection of artifacts. Meanwhile Maureen Whalen, Marie Poinan, and Lee Strauss have created a new exhibit on the War of 1812 which has replaced the very popular Beatlemania exhibit. Member Jane Grant is preparing a "Barns of Greece" exhibit for the fall and a photo exhibit by Robert Bilsky is planned for August. Recently, Greece resident and Google/360 photographer Mark Goho has provided us with an on-line virtual tour of our museum. The photos will soon be on our web-site.

On April 7th a reception was held at our historic center to kick off our 2014 capital campaign. Nearly 50 of our members, friends, and volunteers joined us in support. At the campaign kick-off, Don Riley spoke about the Town's bicentennial year in 2022 (*which is only eight years from now*) and how we, the Greece Historical Society, will play an important part in helping Supervisor Bill Reilich and the Town administration in planning for this important event.

We have now re-written our by-laws and are reviewing them for approval by the State Board of Education. We have finished a financial review of our society by Gary Krauss CPA, P.C. and will be implementing his recommendations. We have our new software up and running and have our computers networked. When we have spare moments we are planning for our annual strawberry festival on June 16th.

This past month, using a grant from The New York State Council on the Arts, I attended a statewide museum conference in Albany. It was a great opportunity to meet other museum professionals and learn and gain new ideas that will help the Greece Historical Society.

Recently we learned that we received a grant from the William Pomeroy Foundation in Syracuse for the purchase of an historic marker designating Paddy Hill School's founding in 1839. The marker will be placed later this summer. We have also secured a Google grant that will allow us to use Google's Map Engine Pro software. **(continued, column 2)**

"Museum Events"

Museum and Museum Shop hours:
Sunday **1:30 - 4p.m.**
GHS office hours: Mon-Wed 9:30 a.m.-Noon
Museum and Museum Shop are also available during office hours.

Sunday, May 4th, 1:30-4:00 pm.
War of 1812 Exhibit Opens
Opening Day Reception
(See page 3)

New May Exhibit:
EARLY SETTLERS AND SETTLEMENTS
(See page 5)

Mark your calendars....
It's Festival time again !!

Support the Greece Historical Society
and enjoy the summer's first & "best"
community picnic.
(See page 9)

Thank you to everyone who has helped during this past cold winter, especially Bill Peeck who did an exceptional job clearing our sidewalks almost daily during the long winter season.

We hope to see you all at our museum, our Tuesday programs, and at the Strawberry Festival.

Bill Sauers, President

Our Museum Community

The War on Our Shores 1812-1814

Exhibit Opens May 4

It's often called the second war of Independence and it was the last time foreign troops have ever invaded the American mainland. On Sunday, May 4, the Greece Historical Society, will debut a new exhibit to mark the two hundredth anniversary of the War of 1812 highlighting *The War on Our Shores 1812-1814*. Between 1812 and 1814, the British made four visits to Greece's eight-miles along the shore, most significantly on May 14, 1814, when the "Valiant 33" fooled the British into thinking they were a large army. Society volunteers **Marie Poinan**, **Lee Strauss**, and **Maureen Whalen** have researched the particulars of the four incidences and the people who defended the shores of Lake Ontario.

The opening day reception from 1:30-4:00 pm will include a presentation at 2:00 pm by **Jim Fischer** on the *Hamilton and the Scourge*. These two ships lie 300 feet below the surface of Lake Ontario near the area of the Welland Canal; they sank during a squall on August 8, 1813 resulting in the deaths of 90-100 men, the highest loss of life in any single event during the war.

Marie Poinan will have her new book, *Attacked! Charlotte in the War of 1812*, available that day.



Find us on
Facebook

THANK YOU to the BUSINESSES That Have SUPPORTED the GREECE HISTORICAL SOCIETY

Canandaigua National Bank (Latta Rd)
Fleming Point
Greece Chamber of Commerce*
JackCin Tax Service*
Key Bank
Legacy at Park Crescent
Long Pond Auto Body
Long Pond Family Restaurant
Mark DeNeve*
Mark IV Enterprises
Mel's Diner
North Ridge Glass
Northwest Savings Bank (Long Pond Rd)
Party Productions*
The Signery
The Villages at Unity*
Tim Horton's (Long Pond Rd)
Tops Friendly Markets (Mt Read Blvd)
Ultimate Interiors*
Vay-Schleich & Meeson Funeral &
Cremation Chapels*
Wegman Food Markets (Latta Rd)
(* denotes Business Member)

Coming Events

Community Yard Sale coming this summer.

This is a fun way to enjoy a summer weekend.

Clear your clutter or promote your business.

Get ready to sell your stuff.

More information coming soon.



"Museum Shop"

Spring is coming...really. Join us on Saturday, May 17 for the Annual Garden Clubs' Plant Sale. This is always a beautiful day. The Shop will be open so you can check out our latest items. We promise to have extra special sale items you won't want to miss.

Remember we are open every Sunday 1:30-4:00. Please stop in. We'd love to see you.



Wendy Peck, Museum Shop Coordinator

Museum Shop hours: Sun 1:30-4:00, Mon-Wed 9:30-12

What's In That Old Shoe Box?



Many of you have that old shoe box of old photos or carousels (*remember them?*) of 35mm color slides. Some of you "organized people" even have photo albums with meticulously labeled photos. We, at the Greece Historical Society, are looking for photos of Greece life especially from the 1950's, 60's & 70's.

If you have what we are looking for, we can arrange to scan those photos while you wait. Bring a flash drive and we will give you the files we scan. If you live in the area, and are unable to come to us, we may be able to come to your home with our portable scanners.

Give us a call 225-7221 or email greecehistoricalsociety@yahoo.com to make arrangements to help preserve the history of Greece for future generations.

Museum Gardens

Our gardens need help.

For the past six years the Woodside Garden Club has taken care of our Cupola garden on the front lawn and for almost two decades Thyme in the Garden garden club has maintained the back yard rose garden.

We appreciate their efforts and thank them for beautifying our home. Unfortunately neither club is able to continue this work. If you know of another garden club, business or civic organization willing to take on the responsibility of one or both of these gardens, please let us know. Give us a call at 225-7221 or email greecehistoricalsociety@yahoo.com. We are happy to place signage acknowledging your work.

Officers & Board of Trustees

President:	Bill Sauers
Vice President:	Paula Smith
Secretary:	Sandy Peck
Treasurer:	Elizabeth Tudisco
Executive Director:	Needed
Honorary Trustee:	Don Newcomb
Trustees:	Rick Antelli
	Ruth Curchoe
	Sandy Peck
	Gregg Redmond
	Bill Sauers
	Thomas Sawnor
	Cyndie Shevlin
	Paula Smith
	Elizabeth Tudisco
	Jack Wallenhorst

Committee Chairs::

Building	Needed
Grounds	Bill Peck
Historian Office	Alan Mueller
Membership	Maureen Whalen
Museum	Viola White
Museum Shop	Wendy Peck
Newsletter	Cyndie Shevlin
Programs	Bill Sauers
Publicity	Marge Zercie
Registrar	Lee Strauss
Tours, Education	Kathie Firkins
	Linda Evans

Please Remember

The Greece Historical Society in your tax and estate planning. We are a non-profit organization supported by your *gifts and endowments.

We sincerely appreciate your donations.

*Tax deductible per (Section 501(c)(3) of the Internal Revenue Code

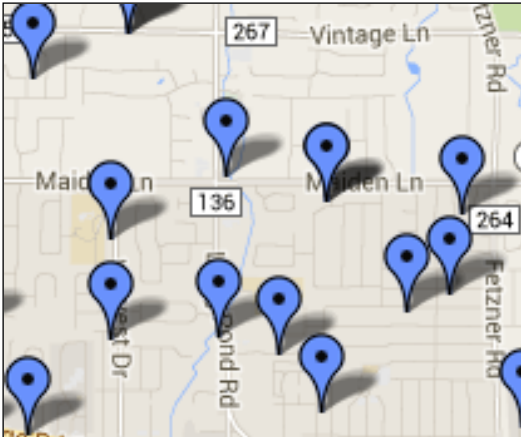
For newsletter input only, please contact: corintheditor@yahoo.com

Cyndie Shevlin, Editor

This newsletter is published bi-monthly by the editor for the Greece Historical Society and Museum.

“New Exhibits at the Greece Museum ”

Google Mapping



Joe Vitello recently secured a Google grant that will allow us to use Google's Map Engine Pro online software. Soon we will be able to create and share interactive maps with "hot points" based on various subjects. We could post the history of our local street names, locate local barns and landmarks with photos and descriptions, show locations of historical markers; there are endless possibilities. These maps may spark an interest and cause folks to get out and explore the history of our area. The maps could be viewed in the museum on our touch screen computer or online at home. All the possibilities for this software take time and volunteers; more information on this project will be forthcoming.

EARLY SETTLERS AND SETTLEMENTS: An interactive display is set up in the living room and dining room about the early settlements along the Genesee River and the adventurous settlers who established Charlotte, Kings Landing/Hanford Landing (now Kodak Park area), and Frankfort (now the High Falls area). Wasn't there a fort near Driving Park? Yes, it was called Fort Bender, built to protect nearby settlements from the British during the War of 1812. **Joe Vitello** and **Marilyn Malinka** did extensive research to create this exhibit. The exhibit includes an interactive map, as well as copies of maps from the 1700-1800s. A DVD titled, *Saga of the Seven Settlements*, can be seen and excerpts from Eli Granger's 1797 diary are also displayed.



2014 Capital Campaign Team

In to r: Bill Reilich, Roger Boily, Al Meilutis, Elaine Matthews, Laura Jachimiak, Don Riley, Tracy Wooden, Jody Perry, Gene Preston, Lee Strauss, Bill Sauers,
Absent from photo Rick Antelli and Patty Anthony.

2014 Capital Campaign

On April 7th a reception was held at our history center to kick off our 2014 capital campaign. Nearly 50 of our members, friends, and volunteers joined us up in support of the campaign. Between now and our June 16th Strawberry Festival, members of the campaign team will be canvassing area businesses and organizations to insure we meet our goal. Because of last year's efforts we are nearly half way to our \$25,000.00 goal, which will help fund a new roof and other needed repairs and upgrades. We would like to thank Don Riley and Mark IV for their leadership and support in organizing this campaign and thanks to everyone else who came to show their support.

"FROM THE HISTORIAN'S FILE"

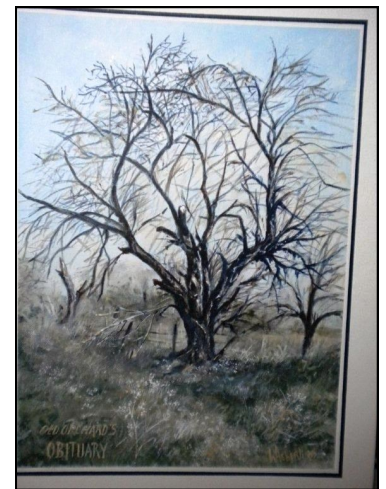
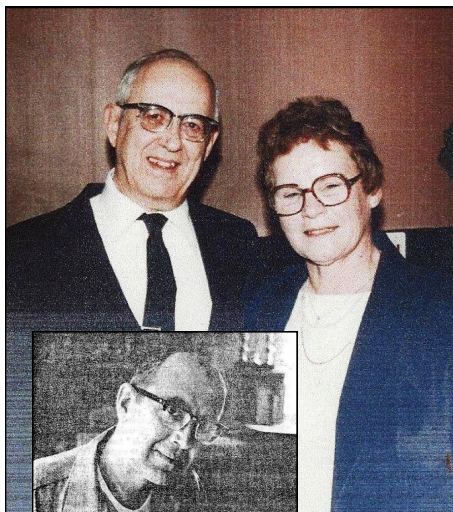
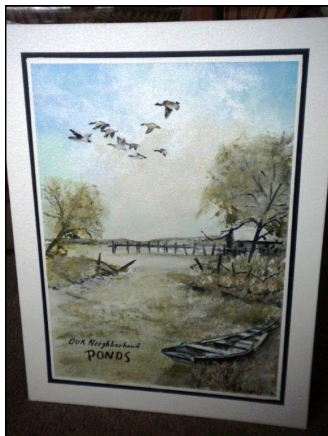
William Aeberli - forgotten Greece artist of the recent past!

William I. Aeberli (1925 - 2011) spent most of his adult life with his wife, June Sanford (1925 - 2011), on Fetzner Rd in the Town of Greece. Bill was a self-taught artist in several mediums and a columnist for the Greece Press in the 1970s and early 1980s. If you read the Post in those years you might have read his column on some historic spot or personage of the town, well documented along with an appropriate pen and ink drawing. The Greece Press published almost fifty of Aeberli's articles.

Bill and June were married 63 years and both died in January of 2011, less than a month apart. A memorial service at Lakeside Presbyterian Church was held for them in May of 2011. The Aeberli name caught my eye in the newspaper about the service. The historian office files held numerous interesting articles by Mr. Aeberli and they prompted me to attend the service. A post service luncheon at the Charbroil Restaurant on Edgemere Drive (the Aeberli's favorite local eatery) put me in touch with Bill and June's relatives, (they had no children) especially his two nieces, Karen Mulcahy of Penfield and ChrisAnn Goosen of Zelienople, Pa.

After the estate was settled, I was contacted and asked would there be interest in having the Greece Historian Office accept some of Uncle Bill's paintings, ink drawings etc. for the archives. Since there was already a small collection of his many newspaper columns and earlier materials he had given to the former town historian, the answer was an overwhelming, YES!, we would be most happy and appreciative of any items they felt should become part of the Town's collection.

Through the kindness of Bill's family we have received a number of ink sketches, first drafts, photos and other material during the past few years. The images of four oil paintings shown below are the latest arrivals that will be added to the Aeberli collection. In the near future they will be framed and on view from time to time at the museum.

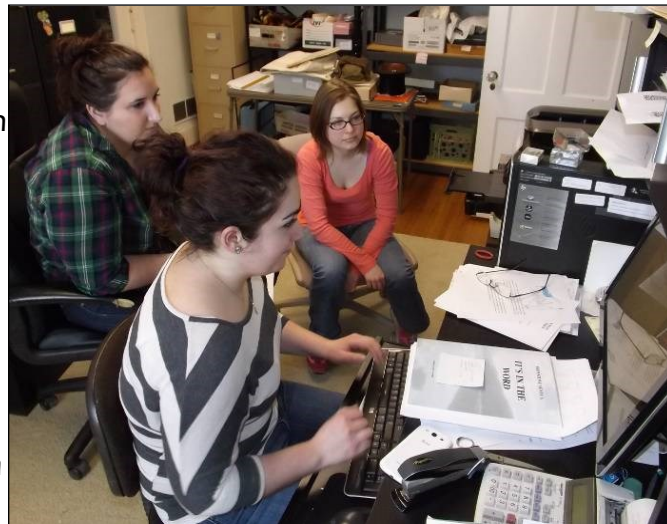


Photos, data supplied by **Alan Mueller**, Greece Historian's Office. If you have any information on our photos, call Alan at 663-1706.

"Our Volunteers"

Our society is blessed with some young, creative, energetic and talented volunteers. Cynthia Hunt has a Master's Degree in Museum Studies from Cooperstown, Andrea Leasure completed and Shaina Sarkis is enrolled in St. John Fisher's Museum Studies program, and Ashli Couch has a degree in archeology and a Master's degree in American History.

These young women have been busy photographing artifacts in our collection, entering the data in Pastperfect, our museum software, storing the artifacts in archival boxes, helping with the Haudenosaunee exhibit and teaching us how to design exhibits, and care for the collection properly. Andi and Cindy work full time, Shaina is a full time student, and Ashli works part time as well as volunteers at the Cobblestone Society. It is good of them to help us, given their busy schedules. They would like to work full time in the museum field, but jobs are scarce in the Rochester area. They are keeping active in the field by volunteering at our Greece Museum.



Shaina Sarkis at computer; Andi Leasure and Cindy Hunt look on as the women design the signs for the Life in the Longhouse scenes and the Haudenosaunee Summer Camps mural.

Stop in when you can on a Monday, Tuesday, or Sunday afternoon to meet them. Take a look at the unique signs they created in the Haudenosaunee exhibit – written in English and the Seneca language.

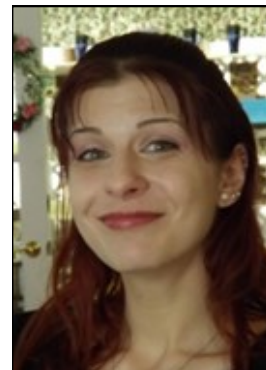


Cindy Hunt, Andrea Leasure and Lee Strauss examining items to be used in the new Native American Exhibit



Shaina Sarkis preparing some of our artifacts for proper archival storage

Another intern who is helping us is Pam Root. Pam is getting her Master's degree in Social Work at Roberts Wesleyan College. Pam is also volunteering at the Women's Care Center in Charlotte. She is doing data entry and helping us organize our files. Her hobby is photography.



“ Happenings at the Greece Museum”

Monday, June 16th, 2014 Greece Museum 4– 8 pm

Festival Volunteers Needed

Please help us for this fun event!

This is our major community fundraiser of the year. If you have enjoyed our programs this year, please help support future programs and exhibits by volunteering to help us with this important event. We can use your help just a few hours setting up in the morning, parking, selling tickets, being a greeter in the museum and/or clean-up. If you can help, please call 225-7221 or e-mail greecehistoricalsociety@yahoo.com



Neil Zwierlein, Dan Hedburg, Lee Strauss and Joe Vitello reviewing Mother of Sorrows parish history.



On March 11th nearly 100 guests enjoyed Dennis Bielewicz's story of two civil war soldiers titled "Heroes in the Attic"

“SWEET SENSATIONS”

Strawberry & Dessert Tasting Festival Fundraiser

Monday June 16th, 4:00 p.m. to 7:30 p.m.

Greece Historical Society 595 Long Pond Road

Dessert tastings *(while supplies last)*
from area establishments including
**Tim Horton’s, Mel’s Diner, Fleming Point,
Long Pond Family Restaurant, Tops Friendly Market,
Legacy at Park Crescent and Villages at Unity**

Hots and burgers available from **Barton’s Parkside Hots**
Family entertainment with **Flyin’ Brian & Miss Understood**
Music by **“Tie Dyed To Go”** (5:30 -7:00 p.m.)

Door prizes & great prizes at the Chinese raffle
Displays and information by non-profit local organizations
Special War of 1812 exhibit inside
Free Parking on our lawn or at the Town Hall

New this year will be the music of *Tie Dyed To Go*, a 5-piece band from the Rochester area. They play acoustic versions of songs that lend themselves to mixtures of guitar, ukulele, mandolin, and banjo with vocal harmonies. They cover a variety of tunes from 60's pop to current Americana, with some original songs included.



Greece Historical Society
 Greece Museum
 595 Long Pond Road
 P.O. Box 16249
 Rochester NY 14616-0249



Non-Profit Org.
 U.S. POSTAGE PAID
 Rochester NY
 Permit #1188

Return Service Requested

Your donations and memberships help keep our Museum open. Thank you for your support.

CONTACT US

GHS Office: 585-225-7221

Email: greecehistoricalsociety@yahoo.com

Website: www.greecehistoricalsociety.net

Historian's Office: greece.historian@frontiernet.net

Corinthian Editor: corintheditor@yahoo.com

Your tax deductible membership in the Greece Historical Society is available at several levels. To join, renew, upgrade your membership or to donate a gift, fill out and mail the form below or bring it to our next program meeting. To pay via PayPal, visit our website at www.greecehistoricalsociety.net

When you receive your renewal letter, please consider upgrading.

Membership Application

GREECE HISTORICAL SOCIETY & MUSEUM

(Please print)

DATE: _____

NAME: _____ PHONE: (____) _____
(Last) (First) (M.I.) (Spouse, if applicable)

ADDRESS: _____
(Street) (City/Town) (State) (Zip Code + 4)

E-MAIL ADDRESS: _____

<input type="checkbox"/> New Application
<input type="checkbox"/> Renewal
<input type="checkbox"/> Upgrade
<input type="checkbox"/> Donation

ANNUAL MEMBERSHIP CLASSIFICATIONS

Student-Senior (65 & over)	\$10.00 ___	Business/Professional	\$50.00 ___
Individual	\$12.00 ___	Patron	\$75.00 ___
Family	\$20.00 ___	Sustaining	\$150.00 ___
Supporting	\$50.00 ___	Life Members (Each)	\$500.00 ___

Memberships are tax deductible. Please pay online via PayPal or make check payable and mail to :

Greece Historical Society P.O. Box 16249 Rochester NY 14616-0249

You will receive your membership card(s) and receipt by return mail.