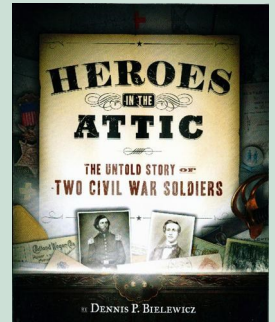


### March 2014

Tuesday, March 11th, 2014 Greece Town Hall - 7pm

#### Heroes in the Attic – the Untold Story of Two Civil War Soldiers by Dennis Bielewicz

In a secret room of an abandoned house, Dennis P. Bielewicz uncovered documents which led him to research and retell the story of the complete military service of H. Seymour Hall and Benjamin Coffin in his book, *Heroes in the Attic – the Untold Story of Two Civil War Soldiers*. It is the true saga of two Livingston County college students who abandoned their classes to fight in the Civil War. Compelling in scope, the story of Hall and Coffin defines the heroism of common men against the backdrop of history.



**Dennis Bielewicz**, a military veteran and retired school librarian, lives in Ontario, NY. He spent his formative years in Portageville and Nunda.

Public welcome. Reservations not necessary. GHS members, free. A \$2.00 donation is appreciated from others.

#### Volume 35, Issue 2

#### March-April 2014

In Every Issue:		Points of Interest:	
President's Message	2	Programs	1
Board of Trustees	4	Calendar	2
Happenings	5,7	Museum Education	5
Contact Us	8	Historian's File	5,6

### April 2014

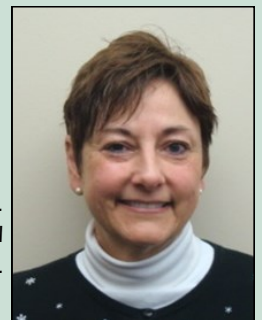
Tuesday, April 8th, 2014 Greece Town Hall - 7pm

#### The Adventures of Sarah Bonesteel by Babette Huber, Victor Town Historian

The story of Sarah Hall Bonesteel is a story of a woman of intelligence, adventure and courage. She was in the first class that accepted women at MIT. The program will introduce you to Sarah, who traveled the high seas, who taught Helen Keller, who traveled 5000 miles in a Buick Six touring car on a cross country tour of the United States. All this was done between 1873 and 1922.

This program will inspire you and amaze you.

**Babette Huber** has been the Victor Town Historian since 1990. She was an elementary teacher in Victor of 30 years, as well as an author of articles, booklets and plays on local history.



Public welcome. Reservations not necessary. GHS members, free. A \$2.00 donation is appreciated from others.

## **"President's Message"**

### **New "Stuff"**

Historical societies and/or museums are not just about "old stuff" and old houses. History happens every day and it's our job to collect and preserve today's history, to care for and make available that history. Modern technology can make that job easier, but it also takes knowledgeable people, planning, up to date equipment and of course, money.



Thanks to **Todd Cameron** of **Kriterium Technology**, three new state-of-the-art computers and a powerful network server have been donated to us. Through a grant, we have received a new Microsoft Office package and our IT tech, **Mark DeNeve**, has networked our computers with Wi-Fi throughout the building. We also have the privilege of working with some young volunteers who are helping us with this new technology.

We are now using on-line bookkeeping, and are getting used to our museum software, Past Perfect. We now use it to manage our membership and we will soon be adding a catalog of our artifacts.

Using a new digital camera and portable scanning equipment, we are able to document all that "old stuff" and digitally copy old photographs and 35mm slides. With a new "smart" television, computer projector and presentation software, we can now create and show videos and PowerPoint presentations with ease. We have also copied old VHS tapes to DVD on to archival disks.

In partnership with our local library and the Rochester Central Library, fifty photos from the Greece historian's office files have been scanned and digitized and are now available online along with basic data about the images.

Not so hi-tech, but still new, is the freshly painted hallway between the kitchen and our exhibit hall, our updated Native American exhibit, and two other new exhibits. We also have "new snow" in our winter ice harvesting exhibit.

**(continued, column 2)**

## **"Museum Events"**

Museum and Museum Shop hours:  
Sunday **1:30 - 4p.m.**  
GHS office hours: Mon-Wed 9:30 a.m.-Noon  
Museum and Museum Shop are also available during office hours.

### **Two New Exhibits in March:**

(See page 5)

**The Beatles**

**Greece Town Supervisors**

**Sunday, May 4th, 1:30-4:00 pm.**

**War of 1812 Exhibit Opens**

(See page 5)



### **Sadly...**

Among the group pictured is Bob Pignone. These folks worked diligently during the move of our house from Latta and Long Pond Roads to our present site, and with the renovations of the house afterward. Sadly, Bob Pignone recently passed away. The Society will be eternally indebted to him for his knowledgeable input in the planning of the work and his many hours of labor. Bob is the second from the left in the first row of the picture.

In March we are beginning a new Capital Campaign to continue raising funds for a new roof and other repairs and upgrades to our historical center.

We could not accomplish any of these purchases, donations, upgrades etc. without your support. Thank you to all our members, friends, volunteers, and all the people and organizations who support the preservation of our Town's history.

**Bill Sauers, President**

## Our Museum Community

### Museum Shop Volunteers



L to R: Sandy Peck, Wendy Peeck, Betty Schmidt, Gail Wang (new), Pat Palumbo, Sue Eddy, Bobbie Young.  
Not pictured – Ann Woods, Peg Paradise, Sue Hodge

### Capital Campaign to begin Soon

We are developing plans for an exciting kick-off to our 2014 Capital Campaign. We have done well so far, reaching nearly 50% of our goal to raise funds for a new roof and other improvements and needed upgrades to our historic center. Watch for more details in a separate mailing, on our website or on our Facebook page.

### THANK YOU to the BUSINESSES That Have SUPPORTED the GREECE HISTORICAL SOCIETY

Canandaigua National Bank (Latta Rd)  
Fleming Point  
Greece Chamber of Commerce\*  
JackCin Tax Service\*  
Key Bank  
Legacy at Park Crescent  
Long Pond Auto Body  
Long Pond Family Restaurant  
Mark DeNeve\*  
Mark IV Enterprises  
Mel's Diner  
North Ridge Glass  
Northwest Savings Bank (Long Pond Rd)  
Party Productions\*  
The Signery  
The Villages at Unity\*  
Tim Horton's (Long Pond Rd)  
Tops Friendly Markets (Mt Read Blvd)  
Ultimate Interiors\*  
Vay-Schleich & Meeson Funeral &  
Cremation Chapels\*  
Wegman Food Markets (Latta Rd)  
(\* denotes Business Member)

### Coming Events

Tuesday, May 13, 2014, 7:00 p.m., Greece Town Hall  
**American Songs: From the 1890s to the Post-War Years by Michael Lasser**

Monday, June 16, 2014, 4:00p.m.–8:00 p.m. 595 Long Pond Rd  
**Strawberry & Dessert Tasting Festival**



**Betty Fetter**, longtime volunteer, is our newest life member. Weekly, Betty helps Alan Mueller in the historian's office, clipping and copying news articles for the historian's files, and filing them in the appropriate folders. Prior to this, she served as the Society's Registrar, accessioning and de-accessioning artifacts, photos and archives in our collections. Both are tedious jobs, but she is patient and finds humor to share with coworkers. Her macular degeneration kept her from continuing as Registrar, but she still enjoys her activities with the Rochester Gem Society, helps at her church, Greece Baptist, and walks daily at her residence at West Village of the Villages at Unity. Betty doesn't mind telling her age – she is an active 91 years of age. Betty said the reason she became a life member is that she couldn't remember to pay her membership dues, but we think she is too modest about her donations. She has also given many artifacts to the Society's collection. Betty is a joy to work with and to know. She enriches our lives as she shares her organizational skills with us.



## "Museum Shop"

We are so grateful to have wonderful volunteers in our Museum Shop. We gathered in February for a fun meet & greet. (See picture on page 3) We shared ideas and are making plans for small changes to make our shop better. We continually encourage people to request items they'd like to see displayed for sale. Please stop in and say hello. Our volunteers look forward to meeting you.



**Wendy Peck, Museum Shop Coordinator**

**Museum Shop hours: Sun 1:30-4:00, Mon-Wed 9:30-12**

## Sunday Programs at the Greece Museum

Sunday, March 16, 2014 2:00 pm Greece Museum

### Tatting Demonstration

Midge's Tatters demonstrates traditional lace-making technique.

On Sunday, March 16 at 2:00 the Greece Historical Society will present a tatting demonstration given by Mary Ellen Davie from "Midge's Tatters." This group, founded by Marguerite "Midge" Richards, wants to spread the word about learning this old technique of making a durable lace. The lace is crafted by weaving a series of knots and loops with a hand-held shuttle. Tatting was used to make decorative lace trims, dollies, and collars. So come see these nimble fingers at work as they produce beautiful designs.

## "New Trustees"

At our Annual meeting in February we presented our **2013 Annual Report** (<http://greecehistoricalsociety.net/>) and **Financial Statement**. We elected three new board members and selected the Endowment Fund trustees. The new board members are:



Gregg  
Redmond



Betty  
Tudisco



Thomas  
Sawnor

### **Endowment Fund Trustees**

The new Endowment Fund Trustees are **Lorraine Beane** and **Mary Lee Strauss**; they will join current endowment trustees, **Joe Riesenberger**, **Jack Wallenhorst** and **Betty Tudisco**.

## Officers & Board of Trustees

<b>President:</b>	Bill Sauers
<b>Vice President:</b>	Paula Smith
<b>Secretary:</b>	Sandy Peck
<b>Treasurer:</b>	Elizabeth Tudisco
<b>Executive Director:</b>	Needed
<b>Honorary Trustee:</b>	Don Newcomb
<b>Trustees:</b>	Rick Antelli
	Ruth Curchoe
	Sandy Peck
	Gregg Redmond
	Bill Sauers
	Thomas Sawnor
	Cyndie Shevlin
	Paula Smith
	Elizabeth Tudisco
	Jack Wallenhorst

### Committee Chairs:

Building	Needed
Grounds	Bill Peck
Historian Office	Alan Mueller
Membership	Maureen Whalen
Museum	Viola White
Museum Shop	Wendy Peck
Newsletter	Cyndie Shevlin
Programs	Bill Sauers
Publicity	Marge Zercie
Registrar	Lee Strauss
Tours, Education	Kathie Firkins
	Linda Evans

### **Please Remember**

**The Greece Historical Society** in your tax and estate planning. We are a non-profit organization supported by your \*gifts and endowments.

**We sincerely appreciate  
your donations.**

\*Tax deductible per (Section 501(c)(3) of the Internal Revenue Code

For newsletter input only, please contact:  
**corintheditor@yahoo.com**

**Cyndie Shevlin, Editor**

This newsletter is published bi-monthly by the editor for the Greece Historical Society and Museum.

## **“New Exhibits at the Greece Museum”**

**THE BEATLES:** The March display in the Greece Museum is part of our “British Invasion” exhibits. A Beatles collection of memorabilia, owned by Greece resident, **James Aker**, will help celebrate 50 years of their great music. **Alan Mueller** will play some of his 45rpm records on the record player he managed to find at a garage sale. (Who ever thought we would have to scrounge for a record player!) Come and enjoy the warm memories as you view this extensive collection.

**GREECE TOWN SUPERVISORS:** New in the dining room alcove are display boards featuring two of our former town supervisors – **Don Riley** and **Roger Boily**. The Museum Committee wanted to honor these dedicated public servants for their many accomplishments during their terms of office. You will be surprised at the number of ways they have benefited our community. The display is the creation of **Cathy Anderson** and **Vi White** of the Museum Curatorial Committee.

**WAR OF 1812:** Opening May 4<sup>th</sup> in the museum, another part of the British Invasion will be exhibited. May 14<sup>th</sup>, 1812 was the fourth attack on Charlotte by the British. It is fitting that we tell the story of that forgotten war and its impact on the Genesee area. Our militia of 33 men successfully defended the port, chasing Captain Yeo and his ships from our shores. Learn about the causes of the War of 1812 and the positive results of the war for Americans and Canadians, as well as the Iroquois allies, bloody though the war was. One of the cannon balls fired upon Charlotte will be on display with copies of old maps and paintings from the era. The exhibit will also feature the marine artistry of Greece resident **Larry Wood**, as an event during the period the exhibit is on display. The exhibit is the creation of **Maureen Whalen** and **Marie Poinan**. Marie will also have a booklet about Charlotte and the War of 1812 for sale. Look for more details in our next newsletter.

**EARLY SETTLERS AND SETTLEMENTS:** Also in May, an interactive display will be set up in the living room and dining room about the early settlements along the Genesee River and the adventurous settlers who established Charlotte, Kings Landing/Hanford Landing (now Kodak Park area), and Frankfort (now the High Falls area). Wasn't there a fort near Driving Park? Yes, it was called Fort Bender, built to protect nearby settlements from the British during the War of 1812. **Joe Vitello** and **Marilyn Malinka** did extensive research to create this exhibit. The exhibit includes an interactive map, as well as copies of maps from the 1700-1800s. A DVD titled, *Saga of the Seven Settlements*, can be seen and excerpts from Eli Granger's 1797 diary are also displayed. The traveling exhibit can be taken to other organizations as part of a PowerPoint program.



### **Miniature sleigh restored...winter never exits our exhibit hall!**

The GHS Museum wing has been open for twenty five years. Several of the permanent displays have never been thoroughly cleaned or upgraded. In the last few months we decided to tackle the winter exhibit with its ice harvesting equipment, single seat sleigh with a much smaller version, designed for a small child. The mini-model has been on display all these years with no cleaning or restoration. Always at the back of the display, with its broken dashboard and doughty appearance visitors seldom gave it a second glance.

Now, thanks to the expert repair and rehab of the entire sleigh by **Jim Caffrey**, local artisan, the dash is rebuilt, the wood and metal body is clean and closer to the look it must have had when new in the late 19th century. The winter display also received new (non-melting) fallen snow, the patterned floor under the ice box was stabilized and a nice cushion added to the mini sleigh.

Thanks to **Kathy Anderson**, **Lorna** and **Sharon Logan**, **Alan Mueller**, **Bill Sauers** and **Joe Vitello** for the much needed "fluff-up" of our largest vintage exhibit.

## **"FROM THE HISTORIAN'S FILE"**

"A White Hurricane" – tracking a record storm....

"Cruellest Month" – storm drops 9 inches of snow....

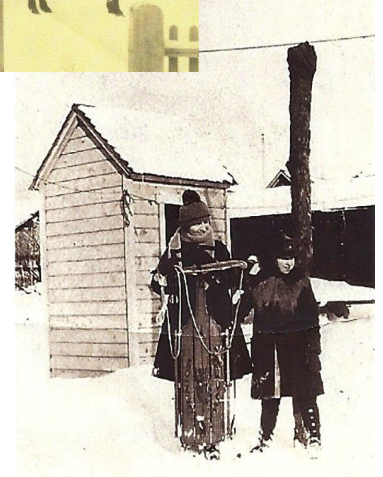
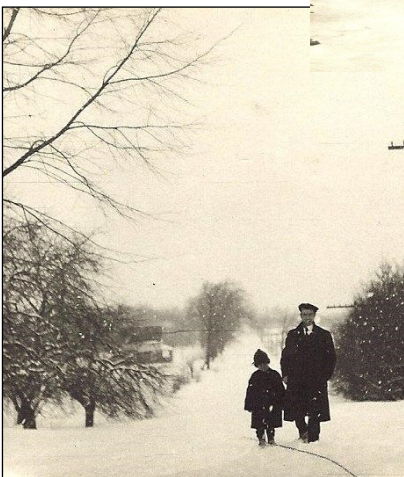
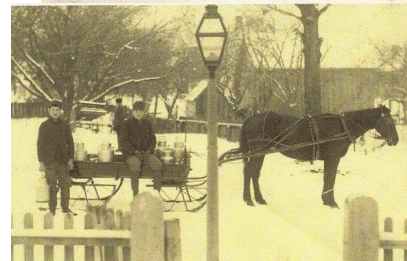
"City Reels Under 25 Inches of Snow" – one of century's worst blizzards....

Are these the headlines that could apply to our winter thus far? How about the winters 1993, 1979 or 1966! Those three winters were all unusual for snow fall. Looking back over a century or more, the records show unusual snowfalls for the 1890s, and then a period of five years from 1904 -1909 with snowfall less than seventy inches.

The 1920s into the early 1930s saw a dearth of snow, but sub-zero temperatures for several years. The average snowfall from 1922 to 1956 was never above 100 inches. Low snow depths were reported through the 1980s....and so on into the present. Are we into a Global Warming period today? We'll find out in a bit.....we think.

Enjoy the various winters in Greece from ninety to one hundred years ago. Few automobiles braved the winters before the 1920s. The horses and sleighs still held sway for a while. Public transportation was by electric trolley on the Lake Avenue line to Charlotte or the Dewey Avenue line that ended at Ridge Road. Bus service was started on Ridge Rd in the early 1900s but proved unreliable and lasted but a few years.

Note the two young ladies ready with their "Junior Racer" sled, and note the small building directly behind them. It's not a telephone booth....NO....but it was necessary before the days of indoor plumbing. Drinking water was from the pump, if it wasn't frozen. The kitchen stove and the "Round Oak" stove are out (unlit). The coal is wet because there is a leak in the basement cistern (caused by the low temperatures). The slab of bacon is hard as a board and the cream has popped out of the milk bottle in the kitchen window "cold box". Morning in "The Good Old Days"—were they....????



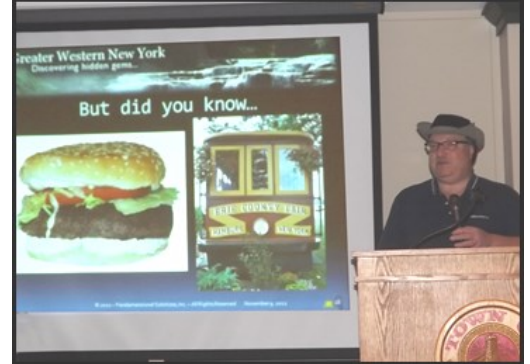
Photos, data supplied by **Alan Mueller**, Greece Historian's Office. If you have any information on our photos, call Alan at 663-1706.

## “ Happenings at the Greece Museum”



On Sunday January 19<sup>th</sup> at the Greece Museum, **Marilyn Lowden Koss Wright** told stories from her book, “*Patchwork Pieces of Life in Greece and Parma*”, about the people and places she loves, including memories of growing up in Greece.

On January 14<sup>th</sup> at the Town Hall, nearly 90 guests enjoyed **Christopher Carosa’s** stories about hidden gems in Western New York.



On February 11<sup>th</sup> at the Town Hall **Justin Murphy** and **Annette Lein** from the Democrat & Chronicle tell about their bicycle ride along the Erie Canal. To see the photos and video portion of their program, go to: <http://media.democratandchronicle.com/canal>

On Sunday February 10<sup>th</sup> at the Greece Museum, Greece resident, **Marlies Adams DiFrate** told the story about her family’s entrapment in Nazi Germany during World War II, written in her book “*Queen of the Bremen*”.



### New Computer Equipment Donated

We would like to acknowledge and thank **Todd Cameron** of **Kriterium, LLC** for donating and installing a new HP server and three new computer workstations. This equipment replaces several outdated computers which were not upgradable and unable to use current software. Additionally, we now have plenty of storage space for data, media, and image files and can share data between computers thus making it possible for more volunteers to work at the same time.

Our dues and donations barely support our operating expenses and this equipment, valued at \$2,100 plus the cost of installation, would not have been possible without Kriterium’s generosity. We would also like to thank GHS member **Terry LeFeber** for coordinating this project.

**Kriterium LLC**, located at 595 Blossom Rd., is a leading provider of technology management services for businesses of all sizes and industries. The company focuses on consistent communication with customers and maintains a commitment to expertise in the emerging technologies that will give your business an edge.

Greece Historical Society  
 Greece Museum  
 595 Long Pond Road  
 P.O. Box 16249  
 Rochester NY 14616-0249



Non-Profit Org.  
 U.S. POSTAGE PAID  
 Rochester NY  
 Permit #1188

Return Service Requested

Your donations and memberships help keep our Museum open. Thank you for your support.

**CONTACT US**

**GHS Office: 585-225-7221**

**Email: [greecehistoricalsociety@yahoo.com](mailto:greecehistoricalsociety@yahoo.com)**

**Website: [www.greecehistoricalsociety.net](http://www.greecehistoricalsociety.net)**

**Historian's Office: [greece.historian@frontiernet.net](mailto:greece.historian@frontiernet.net)**

**Corinthian Editor: [corintheditor@yahoo.com](mailto:corintheditor@yahoo.com)**

Your tax deductible membership in the Greece Historical Society is available at several levels. To join, renew, upgrade your membership or to donate a gift, fill out and mail the form below or bring it to our next program meeting. To pay via PayPal, visit our website at [www.greecehistoricalsociety.net](http://www.greecehistoricalsociety.net)

When you receive your renewal letter, please consider upgrading.

**Membership Application**

**GREECE HISTORICAL SOCIETY & MUSEUM**

(Please print)

DATE: \_\_\_\_\_

NAME: \_\_\_\_\_ PHONE: (\_\_\_\_) \_\_\_\_\_  
*(Last) (First) (M.I.) (Spouse, if applicable)*

ADDRESS: \_\_\_\_\_  
*(Street) (City/Town) (State) (Zip Code + 4)*

E-MAIL ADDRESS: \_\_\_\_\_

New Application  
 Renewal  
 Upgrade  
 Donation

**ANNUAL MEMBERSHIP CLASSIFICATIONS**

Student-Senior (65 & over)	\$10.00 ___	Business/Professional	\$50.00 ___
Individual	\$12.00 ___	Patron	\$75.00 ___
Family	\$20.00 ___	Sustaining	\$150.00 ___
Supporting	\$50.00 ___	Life Members (Each)	\$500.00 ___

Memberships are tax deductible. Please pay online via PayPal or make check payable and mail to :

**Greece Historical Society P.O. Box 16249 Rochester NY 14616-0249**

You will receive your membership card(s) and receipt by return mail.