

THE CORINTHIAN

GREECE HISTORICAL SOCIETY and MUSEUM

Upcoming Programs

Our popular monthly programs will begin again in September
Mark your calendars now!

Tuesday, September 8, 2009

Forging the Freedom Trail Through the Genesee Country
By Dr. David Anderson,
Chairman- Rochester/Monroe County Freedom Trail Commission

Tuesday October 13, 2009

The American Arts & Crafts Movement in New York State
By Dr. Bruce Austin, Chairman and Professor of Communication at RIT.
(A program of the New York Council for the Humanities.)

Volume 30, Issue 4

In every issue:

President's Message	2
Director's Message	3
Museum Shop	4
Contact Us	8

July-August 2009

Points of Interest:

Program Events	1
Museum Events	2
Greece History	6-7
Photos	7

Upcoming Programs

Tuesday November 10, 2009

**"Leadership and Groundwork in Preparation for the Town of
Greece entering the 21st Century"**

by Don Riley, Town of Greece Supervisor 1972 – 1989

Friday October 9th, 2009

40TH ANNIVERSARY DINNER PARTY

Join us at the Golden Ponds Restaurant and help celebrate
the Greece Historical Society's 40th anniversary.

Watch the next Corinthian for more information and reservation information.

"President's Message"

It was in October 1969 that several interested individuals living in the Town Of Greece met for the first time with the idea of forming a local historical organization to preserve the town's history. They soon developed into The Historical Society of Greece. They found a small home on English Road to meet and share stories and collect photographs and artifacts relating to the Town's history. Little did they know that 40 years later their little collection would have grown to thousands of items and photographs in addition to a 5,000+ square foot house and museum on Long Pond Road. Forty years later that organization, now called the Greece Historical Society, is known throughout the area for its fine monthly programs and commitment to educating school children about the history of the area. It has become the "go to" center for local research and exhibits.

As with any organization, **we need to change to keep up with the needs of our community and that's where we need your help.** We are looking for fresh ideas for our programs, education initiative, museum exhibits and/or public outreach. Our volunteers have been doing a wonderful job and many of them have been active for many years, but some of us have just run out of ideas. If you have any ideas you'd like to see developed, please send me a note. All ideas, big or small, are welcome. It takes some time, talent and money and we may not use all your ideas right away, but we would surely appreciate any and all you can send. You can send me a letter with your ideas at the Museum address on this Newsletter or e-mail me at bsauers@frontiernet.net

Bill Sauers

Thank you for your continued support.



****Museum Happenings****

"Doll and Teddy Bear Appraisals"

Doll appraiser, Helene Marlowe, will be at the Greece Museum and Historical Center on Sunday, August 2nd, from 2-5pm. She will be appraising dolls, paper dolls and teddy bears. The fee is \$4.00 per item with a maximum of 3 items per person. Bring your beloved dolls to this popular event.

While waiting to be called by number, you will be able to browse in our Museum Shop or visit our Museum exhibits.

Phyllis Brown, Curator

"Along Greece Pathways "

The 19th & 20th Century Transportation Exhibit is still up and running in our museum hall....and so is our miniature model of the 1831 Dewitt Clinton, the first steam passenger railroad in New York State. A full scale working replica of this train was featured at The Rochester Centennial Exhibition in 1934. Be sure and stop in on a Sunday afternoon to view the miniature model in action and see several photos of the Dewitt Clinton when it was in Rochester.

Also check out a superb display on the history of the Erie Canal, early travel on Ridge Road, and bicycle paths in Greece in the 1890s. We have plenty of vintage photos, extensive material on the Mantiou Trolley and other miniature trains.

Alan Mueller, Museum Committee

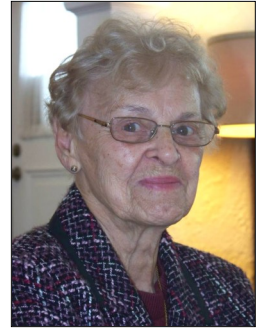
See The Corinthian in color.

Look online at our website,
historicalsociety.greeceny.org

“From the Desk of the Executive Director “

Many thanks to my many friends and associates for the support that was given to me at the passing of my husband, **Art**, on May 4th.

Art was a past officer (including treasurer and president), as well as a life member of The Greece Historical Society. He understood the necessity of providing the people of Greece a quality museum and enjoyed the challenge to establish a permanent home for the Society at 595 Long Pond Rd. The work to finish the homestead into a public building took 6000 volunteer hours in order to pass code and open the museum.



Many early retirees practically moved into what was a derelict building to work long hours and days. Art not only contributed physical labor working on walls, ceilings, windows and whatever else came along, but also, as treasurer, guided a wise spending of available funds and secured donations to move the work along.

While he was president, we moved into the new building and he was instrumental in procuring much funding. He was very friendly and made close friendships among the workers.

Art graduated from Aquinas in 1944, spent two years in the Air Force, then graduated from the University of Rochester in 1951. He lived in Greece since 1956 and raised four children here. He was active in starting the Greece “Y”, Our Lady of Mercy Parish, and was a willing officer in many community groups.

Art has been a good role model and will be missed by many.



Lorraine Beane

Art Beane receives a grant for the Greece Museum from Ralph Quattrociochi and Roger Robach in 1995 .

Please support our local businesses

We want to thank our business members for their support.

Long Pond Auto Body, Wolfert-Butler Agency, Carolyn Stiffler Realty, Pettis Pools, Straight Line Contractors, Fedele's Restaurant, Long Pond Family Restaurant, Savage & Son Roofing.

Museum Shop

Every week we meet visitors in our Museum Shop that have never before visited our Museum. I am still amazed that there are so many of our Greece neighbors that don't know about our beautiful home.

We have many unique items available only at our Museum Shop including our beautiful and varied collection of Murano Glass pendants! In addition to coffee mugs, collectibles and t-shirts, we have quite a large selection of **local history books**.

We continue to offer a free copy of "A GROWING LEGACY An Illustrated History of Rochester's Parks" to our guests who renew their Museum membership or purchase a new one. This 62 page booklet with nearly 100 photos, contains the story of the Rochester Parks System.

We look forward to seeing you.

Wendy Peck



Museum Shop hours: Sunday 2:00-4:30 pm

IN MEMORIAM

The Greece Historical Society has been fortunate and proud of its volunteer staff that make us the quality museum that we are. Again we are saddened by the death of one of our "best". **Dorothea Schommer** passed away on June 16th after a long illness.

Dottie and her husband, Tom, were very active here for many years. Dottie was a catalyst in developing new exhibits and using the collections for educating our visitors. Many school children benefited from her ability to teach all ages in a kind and positive manner.

She met hundreds of students and visitors who appreciated her kindness and her inexhaustible memory of local history facts.

The Museum and Curatorial Committee members were her close friends as were the members of the Wise Gals Organization. She was a warm, gracious and lovely lady. We will miss her kind, friendly manner and extend our condolences to Tom.

Officers & Board of Trustees

President	Bill Sauers
Vice President	Wendy Peck
Secretary	Sandy Peck
Treasurer	Jack Wallenhorst
Executive Director	Lorraine Beane
Honorary Trustee	Don Newcomb
Trustees:	Phyllis Brown
	Bill Coe
	Terry Hogan
	Lucia McEntee
	Alan Mueller
	Sandy Peck
	Wendy Peck
	Bill Sauers
	Cyndie Shevlin
	Lee Strauss
	Jack Wallenhorst
	Viola White
	Roberta Young

Committee Chairs:

Museum Shop	Wendy Peck
Grounds & Building	NEEDED
Historian Office	Alan Mueller
Membership	Bernie Wallenhorst
Museum	Phyllis Brown
Newsletter	
Editor	Cyndie Shevlin
Mailing	Betty Fetter
Office Tech	Jack Wallenhorst
Planning	NEEDED
Programs	Bill Sauers
Publicity	Bill Sauers
Tours	Kathie Firkins

Please Remember

The Greece Historical Society in your tax and estate planning. We are a non profit organization supported by your *gifts and endowments.

We truly appreciate your donations.

*Tax deductible per (Section 501 (c)(9) of the Internal Revenue Code

THE EDUCATION COMMITTEE

Spring Activities

We have had a very busy and exciting Spring. During April, May and June we had our usual school tours, which always keeps us on our toes! They are very enthusiastic 2nd graders who have the most interesting and amazing questions and comments. They especially liked our "Here Comes the Bride" display. Even the boys were fascinated with the dresses and pictures. Along with the schools, we had some cub scouts, senior facility groups and also the The Red Hat Society Ladies. One of the most rewarding experiences was the **Friends and Fun** group from the Town of Greece. **Jack Heller** and I, along with their Director, **Addison Steven** were able to take about 40 members through the museum. They are a wonderful group of young adults who thoroughly enjoyed themselves. It's wonderful that we have the volunteer staff to accomodate them. Thank you to all who volunteer their time.

We are currently busy working on a time line for each of our displays in the museum. **Lee Strauss, Linda Evans** and I met with **Jennifer Solomon**, Curriculum Director of Social Studies for the Greece Central School District. We are hoping that she will be able to help us get the information to the schools about our History Boxes and that we can be a resource to the teachers. We will have more meetings in the future to encourage the process.

MARGUERITE HARE BROWNE "Service to Education Award"

It is my pleasure to inform our membership that The Greece Historical Society has been selected to receive the Marguerite Hare Browne Service to Education Award for 2009! This annual award has been given since 1984 to a member of the Greece community, or community organization, influential in the promotion and support of education within our community.

The award committee, which includes members of the Greece Central School District, SUNY Brockport, Greece Rotary and Greece PTSA, selected the Greece Historical Society because we have added the connection of reality to the lives of the children in our schools, as we encouraged them to learn about the history of their home community. The Greece Historical Society has also encouraged and supported the community's teachers and parents, as they continue these lessons in their school curriculum and at home.

Our education and curatorial committees should be very proud of their accomplishments. It is truly an honor to receive this award.

The award will be presented at the 25th Annual Friends of Education Awards "Gala" and Dinner, to be held the Airport Marriott, on Wednesday, October 28, 2009 at 7 pm. If you are interested in attending this "Gala" event please contact **Bill Sauers** by e-mail, bsauers@frontiernet.net or phone 225-3760, so you can be put on the mailing list to receive an official invitation from the awards committee.

KATHLEEN FIRKINS, Education Committee

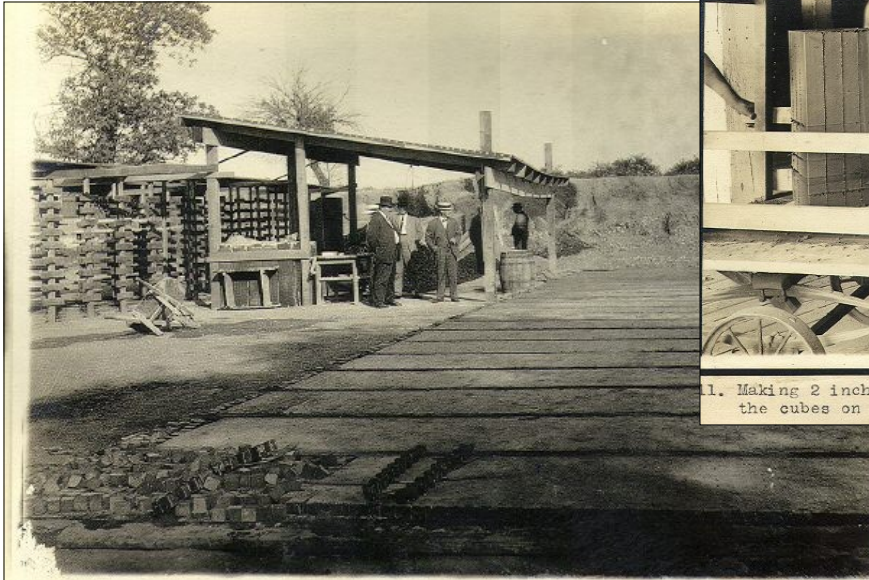
Newsletter "News"

If you have any questions, comments, or other important information for the Corinthian, please email me at: corintheditor@yahoo.com (type GHS in subject line). Thank you for your input. **Cyndie Shevlin, Editor**

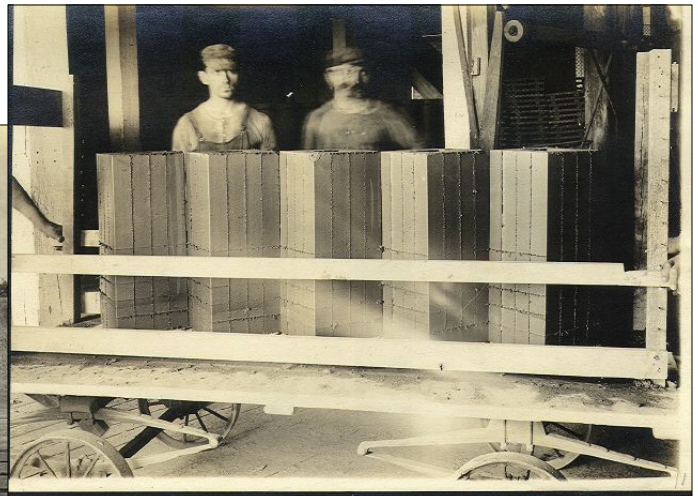
This newsletter is published bi-monthly by the editor for the Greece Historical Society.

GREECE HISTORY in PICTURES

Ridge Road Repairs



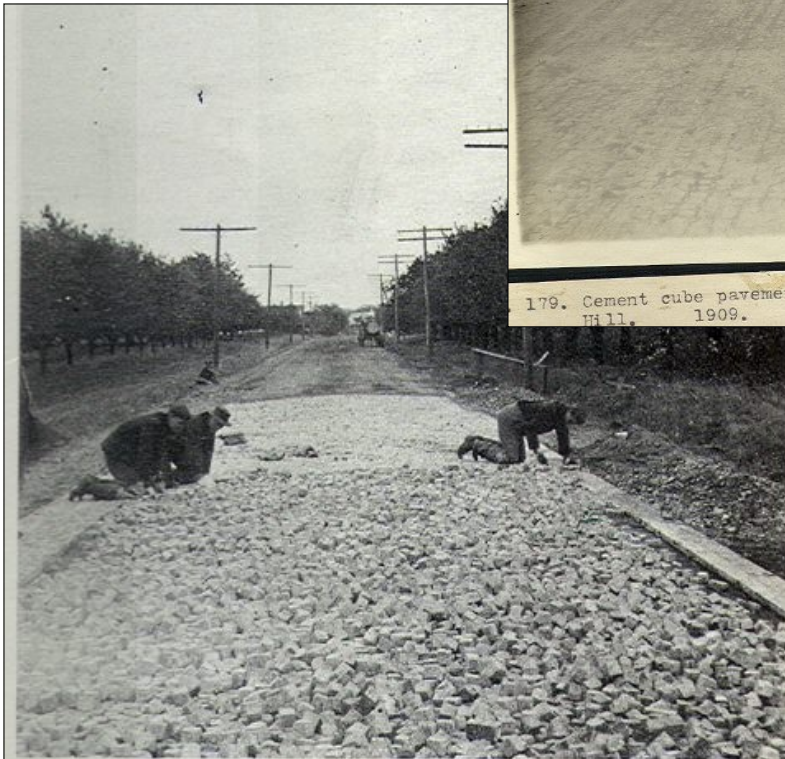
177. Cement cube factory, showing making of cubes on platform with hoop iron forms, showing Supervisors Wright, Porter and Budlong.



1. Making 2 inch clay cubes at Rochester Sewer Pipe Co., cutting the cubes on the buggy.



179. Cement cube pavement on Ridge road, Greece, looking to Hoosick Hill. 1909.



Laying cement cubes, 1909, on Ridge Road West.

These photos from 1909-1910 are the first documentation of improvements to Ridge Road in the town of Greece.

Photos supplied by

Alan Mueller, Greece Historian's Office, Greece Historical Society

FROM THE HISTORIAN'S FILE

Ridge Road Repairs (see pictures p6)

The recent expansion and repaving of Ridge Road West is just the latest of the many upgrades for well over one hundred and fifty years. This narrow, historic pathway west has seen many changes since first traveled by the Native Americans.

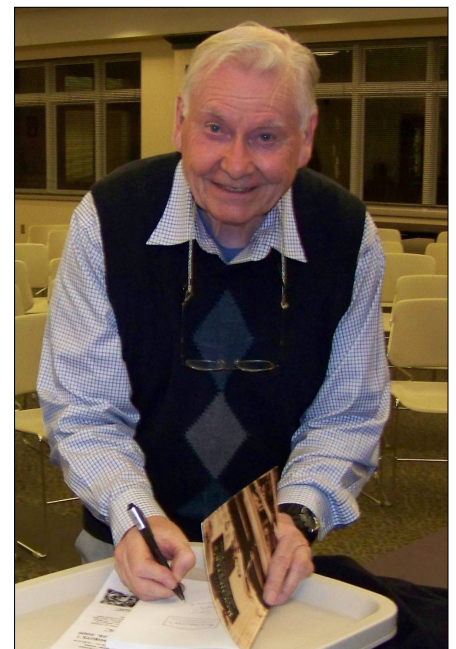
By the late 1890s New York State allocated matching funds to provide improvements of important highways in local townships. Ridge Road from Lake Avenue to West Greece (Hoosick Hill) was one of the first roads in the state to receive such funding. A series of photos from 1909-1910 is the first documentation of improvements to Ridge Road in the town of Greece. Two inch cement cubes were manufactured by the Rochester Sewer Pipe Company at a site just off the Ridge. The cubes were formed and dried in large moulds, put on a horse drawn wagon, then unloaded to wheelbarrows near each section of the road. As seen in one of the accompanying photos, the cubes were then hand laid over a crushed field and limestone base. Scant information exists as to the exact time it took to complete or when it was replaced by another surface. There were further upgrades through the 1920s and 1930s. You will note the rural character of West Ridge Road. Try and find an old farm or even several apple trees along it one hundred years later.



Staw-
berry
Fest
2009



Left: About 75
people at-
tended the
May 12th pro-
gram on the
"History of
Rochester
Hospitals"



Right: Donovan Shilling's April 14th talk about items "Made in Rochester" was attended by over 110 people.

595 Long Pond Road
P.O. Box 16249
Rochester, NY 14616-0249



Non-Profit Org.
U.S. POSTAGE PAID
Rochester NY
Permit #1188

Please check
your address
label for your
membership
expiration.
You may re-
new using the
attached form.
Thank You!

CONTACT US

GHS Office:

Telephone: 585-225-7221

Email: greecehistoricalsociety@yahoo.com

Website: historicalsociety.greecenyc.org

Historian's Office: greece.historian@frontiernet.net

Corinthian Editor: corintheditor@yahoo.com

Greece Historical Society & Museum

*Help Preserve the Past
for the Future*

Membership Application

GREECE HISTORICAL SOCIETY & MUSEUM

(please print)

DATE _____

NAME _____ PHONE: (____) _____

(Last)

(First)

(M. I.)

(Spouse, if Family Membership)

ADDRESS _____

(Street)

(City/Town)

(State)

(Zip Code + 4)

E-MAIL ADDRESS _____

____ New Application

____ Renewal

____ Upgrade

____ Donation

MEMBERSHIP CLASSIFICATIONS

Student - Senior (65 & over)	\$10.00 ____	Business/Professional	\$50.00 ____
Individual	\$12.00 ____	Patron	\$75.00 ____
Family	\$20.00 ____	Sustaining	\$150.00 ____
Family Supporting	\$50.00 ____	Life Members (Each)	\$500.00 ____

Memberships are tax deductible. Please make check payable and mail to :

Membership, Greece Historical Society P.O. Box 16249 Rochester NY 14616-0249

(Please include a self addressed stamped envelope to receive a membership card)

or **BRING COMPLETED FORM TO OUR NEXT MEMBERSHIP MEETING**