

# Milton H. Carter Park

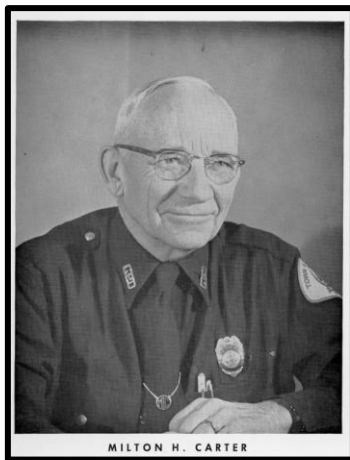
by Keith Suhr

## What's the story on....Milton H. Carter Park?

Carter Park is a 12 acre recreational landscape located on Long Pond Road near The Mall at Greece Ridge. It hosts a playground, baseball fields, basketball and tennis courts as well as an open pavilion. It is a representation of the long tradition and commitment to recreational investment and development by the town and it is named after a particularly meaningful historical local figure; former Greece Police Chief **Milton H. Carter**.



The park was part of a recreational development wave in Greece during the 1950's and the former American Legion property was previously identified as the "Long Pond Road Recreational Area." On 15 September 1970, a Town Board resolution moved to change the name to "Milton H. Carter Park," in honor of the former chief following his death in 1968.



Chief Carter was a resident of Greece from 1904 until his death. Prior to serving as chief, he was a farmer and a decorated World War I veteran. He was the first full time Greece police officer and with the support of his wife Edna, served as chief from 1931 until his retirement in July 1960. He was instrumental in the creation of Greece Volunteer Ambulance Service, shepherded the growth of the department from a small town force to a leading, sophisticated, police agency. He developed and implemented the first professional training of the department well ahead of a New York State law that required it in 1960.

At the testimonial dinner celebrating his retirement, leaders of the community spoke of Chief Carters' "ramrod straight integrity," his kindness and his leadership abilities. Former Greece Town Supervisor Gordon A. Howe said of him at the time, "He bears without burden the grand old name of 'gentleman'." So was his mark on our history and Milton H. Carter Park stands as a remembrance in his honor.

*"Talk of the Town" Newsletter Article, January 2020, Issue by Keith C. Suhr, Assistant Director, Greece Public Library and Greece Town Historian*