

"FROM THE HISTORIAN'S FILE"

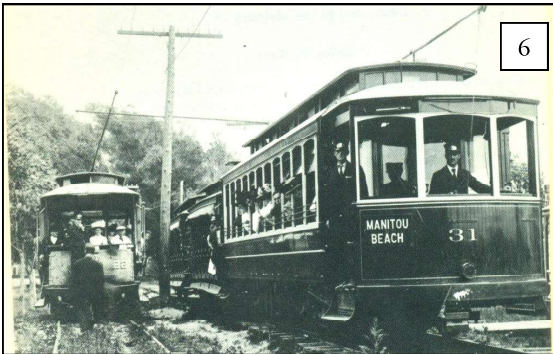
The Manitou Trolley - Charlotte to Grand View Beach

By the mid 1880s a steam railroad was planned to run from Charlotte to Grand View Beach. This plan never went beyond being chartered and was soon abandoned. The electric trolleys that began to appear on the streets of large cities seemed a more practical solution for this short line, which would eventually be just over seven miles.

The Grand View Beach Railroad was organized in 1891 and ran from Charlotte to Grand View Beach, which was not far west of the end of Long Pond Road. By 1895 the line was extended to Manitou Beach with a long trestle over Braddock Bay. Washouts and deterioration of the trestle caused the line to go into receivership in 1907 and a new company was formed in 1908. Improvements were made along the line including a new Braddock Bay trestle.

After the World War of 1917-18 the popularity of the automobile caused revenue to plummet. The Manitou trolley had never been a huge money maker and by 1924 it was apparent that it would have to suspend operation at the end of the season. The passenger service was not resumed in 1925 and finally, the entire line and rolling stock was offered for sale in August 1925.

If you live along Beach Avenue or Edgemere Drive, the former route of the trolley can be hard to trace. But, an odd rail spike or strange jog in the road often times reveals itself as part of that old Manitou line.



1891-1895
Grand View Beach Railroad 1

1895-1908
Rochester Charlotte and Manitou
Beach Railroad

1908-1925
Rochester and Manitou Railroad

Ontario Beach Park Charlotte, N. Y.
Little Round Pond Island Cottage
Round Pond Edgewater Hotel
Buck Pond Crescent Beach Hotel
Long Pond Grand View Beach
Cranberry Pond East Manitou Hotel
Braddocks Bay Elmheart Hotel
Manitou Odenbachs

**ROCHESTER
AND
MANITOU RAILROAD CO.** 2

Time Table Effective Sept. 16, 1909

LEAVE CHARLOTTE		LEAVE MANITOU
*6:00 a. m.		*6:00 a. m.
7:15 a. m.		*6:36 a. m.
8:30 a. m.		7:50 a. m.
10:00 a. m.		9:05 a. m.
11:10 a. m.		10:35 a. m.
1:25 p. m.		11:45 a. m.
2:45 p. m.		2:00 p. m.
4:05 p. m.		3:20 p. m.
5:25 p. m.		4:40 p. m.
6:00 p. m.		6:00 p. m.
6:45 p. m.		7:20 p. m.
8:05 p. m.		8:40 p. m.

*DOES NOT RUN SUNDAYS.



NEW MANITOU BEACH—On Manitou Electric Line 4

CHILDREN'S TICKET
ANY CHILD UNDER TWELVE YEARS

Any Day Except Sunday Season 1906	This Ticket and 10c	GOOD FOR ROUND TRIP PASSAGE
Charlotte to Manitou Beach and Return		
YOU CAN RUN, PLAY, BATHE AND GO FISHING		

Photos, data supplied by
Alan Mueller, Greece
Historian's Office.
If you have any information
on our photos, call Alan at
663-1706.

1. Book page excerpt
2. Trolley schedule 1909
3. Elm Heart Hotel stop
4. Child's ticket
5. Manitou Trolley— west end
6. Trolleys passing on the line